

SWINDON TOWN

FOOTBALL CLUB

official programme



1/-



Complete Comprehensive Coverage

Close-up Action Shots Every Game

At home or away

The Evening Advertiser
has it covered

M^cILROYS

the Department Store
with that something extra *Service!*

Free

DELIVERIES
ESTIMATES ON CARPETS & CURTAINS
CARPET FITTING

WILLIAM McILROY (Swindon) LTD.

Tel. 5294



SWINDON TOWN FOOTBALL COMPANY LIMITED

Registered Office: COUNTY GROUND, SWINDON

President: Mr. W. J. CASTLE

Vice-President: Mr. J. DAVIES

Directors:

Chairman: Mr. H. E. LANE

Vice-Chairman: Mr. R. FRICKER

Messrs. F. L. COLLINGS, A. W. DONE, M. EARLE, C. J. GREEN, F. PLYER,
H. WILLIAMS, K. H. WILMER and Dr. J. NICHOLAS

General Manager: Mr. R. A. MORSE

Team Manager: Mr. F. FORD

SATURDAY, 18th OCTOBER, 1969

Division II

SWINDON v HULL CITY

Kick-off 3 p.m.

SWINDON TOWN	HULL CITY	OFFICIALS
1 Downsborough	1 McKechnie	REFEREE: Mr. B. J. Homewood Sunbury-on-Thames
2 Thomas	2 Banks	
3 Trollope	3 Beardsley	
4 Butler	4 Pettit	
5 Burrows	5 Barker	
6 Harland	6 Simpkin	
7 Heath	7 Wilkinson	
8 Horsfield	8 Lord	
9 Smart	9 Wagstaff	
10 Noble	10 Chilton	LINESMEN:
11 Rogers	11 Butler I.	Red Flag: Mr. B. C. Jakeman Aldershot
12 Jones	12	Yellow Flag: Mr. K. W. Sutcliff Rainham
Colours: Red and White	Colours: Amber and Black	

G. A. Streetly

Tobacconist and Confectioner

**10 BOURNE ROAD
MOREDON SWINDON
Telephone 4956**

C. Goodenough and Sons

Removal and Storage Contractors
any distance

**25 Cricklade Street Swindon
Telephone 4555 and 3855**

CECIL GREEN

Artistic Decorations in all its branches

**12 Armstrong Street
Swindon Wilts
Telephone 4593**

W. J. SELWOOD

Telephone Swindon 5884

Saddlery

General Leather Goods Manufactured and
Repaired to Your Individual Requirements

**103 BROAD STREET
SWINDON WILTSHIRE**

Notton's Cafe

COUNTY ROAD

200 yards from Ground

Perfect meals at all times

For High Class
Central Heating, Plumbing
Painting and Decorating
Electrical Installations
and Repairs

NORTH WILTS Sanitary and Heating Co. Ltd.

**NEWPORT STREET SWINDON
Telephone 5373/4**



THE ALCOHOL FUEL

COATE GARAGE

**REPAIRS - OVERHAULS - WELDING
SERVICING - REBORING - TYRES**

Props. E. V. & W. H. Mattick
Marlborough Road Swindon

Leese, Ing & Co. Ltd.

Mineral Water and
Squash Manufacturers

LANSDOWN ROAD SWINDON

Telephone 22744

Maylott Studios

For Group and Sports Photographs

Official Photographer to
Swindon Town Football Club

**31 Faringdon Road
Telephone 22792**

Always at your service

L. Bibby

For all Types — Rags, Iron and Metal, etc.
Spot Cash Paid. Please Telephone 2101
and our van will call.

**THE PADDOCK ERMIN STREET
STRATTON ST. MARGARET**

news & views

The past week, with no games, has given the players an opportunity to recover from their various injuries. Fortunately we have been comparatively free from serious misfortunes — fractures, etc. — and have been able to maintain a settled team. This must have had some bearing on the results, which have been excellent for the last few games. The understanding as well as the fight and determination is there, and it is good to see us coming back (as we did so often last season), for instance in the Millwall and Carlisle games.

Last Saturday's game against Sheffield United was an excellent one in every respect. Fast, open, attacking football by both teams, and no incidents either on or off the field. Most pleasing. Matches like last week's must surely attract spectators and even increase last Saturday's attendance figure of 21,770, the third best in Division II and much larger than many in Division I.

Our visitors today, Hull City, have one of the finest grounds in the country. Boothferry Park has great facilities, and every potential. The capacity is 42,000, with a high number of seats — namely, 9,500 (Swindon has 4,200). The floodlights — six 175ft. towers — are among the best in Europe. The Club also has its own practice pitches near the main playing area, and the finest indoor training centre at a cost of £50,000.

Their Manager, Mr. Cliff Britton, is now the most experienced Manager in the game. He was first appointed at Burnley in 1945, and after spells at Everton and Preston, joined Hull City nine years ago. Many of our older supporters will remember him as one of the best wing half-backs in the country in the 1930's. England's half-back line up was then Britton, Cullis, Mercer. What would be their value at today's transfer fees?

Hull City's team consists of strong, experienced players, who have been on the books for several seasons: Dennis Butler (full-back), transferred from Chelsea in 1963 for £12,000; Chris Simpkin (left-half), captain, a local player and now one of the senior players; Ian Butler and Ken Houghton, both from Rotherham (fees £40,000 each, 1965); Chris Chilton, much sought after centre-forward; Ken Wagstaff, another £40,000 transfer, and a strong, hard running outside-left.

Hull City has to date obtained 14 points from 15 games (Swindon 18 points from 15 games), but has won only one away game and lost seven, with a goal average of 10 for and 19 against. They will provide stern opposition as proved by the fact they defeated Oxford United last week by three goals to one. Oxford of course drew 0—0 at Swindon earlier this season, and also defeated us at Manor Road in the League Cup Competition.

Whatever the result, we trust all present will watch as entertaining a game as last week's. May the better team win.

Supporters will have noticed with pleasure the Reserves win at Ipswich last Saturday. The team is composed mainly of very young players, but they are gradually gaining skills and experience and should now develop into a very capable side, improving every week.

THE GREAT WESTERN HOTEL

(OPPOSITE SWINDON RAILWAY STATION)

The business man's hotel with a top class
steak bar too!

Specialists in
LUNCHEONS and DINNERS
WEDDING PARTIES and RECEPTIONS
good food — quick service

J. ARKELL and SONS LIMITED Telephone SWINDON 22047

Mills and Merricks Limited

16-17 Bridge Street Swindon

Telephone 5365/6

"HOME OR AWAY"

our function is to ensure that your home is
tastefully and economically furnished

SWINDON'S COMPLETE HOUSE FURNISHERS

New City Office Supplies Limited

Office and Stationery Suppliers
to Industry and Commerce
6 Commercial Road Swindon
Telephone Swindon (STD Code 0793) 4605



CLARK BROS. (Swindon) LTD

Building and Civil Engineering Contractors

CONSULT US FOR
BUILDING AND CIVIL ENGINEERING
CONSTRUCTION IN ALL ITS PHASES

STRATTON ROAD

SWINDON

Telephone Swindon 27261

Supporters' Club Notes

With the season now well under way, the winter's entertainment in the Social Club is also in full cry. A small sub-committee has been formed and is looking for new ideas for fun and games. One of the first innovations was a "Bring and Buy" evening, which, under the persuasive tongue of our masterly auctioneer, Mr. Arthur Young, kept everyone on their toes until Club closing time at 11.30 p.m. Apart from the financial reward — a welcome donation to the children's Xmas Party — it was so popular that enquiries are being made for another session. Watch the Notice Board for further news. If any member has any other bright ideas, have a word with Bill Ranger, our Social Secretary.

Incidentally, Bill has to book well ahead for the Saturday and Sunday music makers, and has given this list of Groups entertaining in the Social Club during the next few weeks:

Saturday, 18th October (tonight)—Ken Kitching and his Band.

Sunday, 19th October—The Utopia (a new group from Devizes way).

Saturday, 25th October—The Mark Five.

Sunday, 26th October—Pete Low.

Saturday, 1st November—The Tempos (don't miss this cheery crowd).

Sunday, 2nd November—The Cliff Taylor Trio.

Friday and Sunday night Bingo sessions are growing more popular than ever. The big payout on the last House is approaching the £20 mark and, in addition, a straight "flier" — a full house only on a 1/- card — is proving highly popular — last Sunday's flier sent the lucky winner home £12 10s. 0d. to the good. With the extension added last year, there is now plenty of room, so why not come along, all you missing Social Club members? Also, membership is now open again and applications are being accepted.

The Supporters' Club has sustained a great loss in the resignation, recently, of our Vice-Chairman, Mr. Tom Stenning, and Mrs. Stenning. Stalwarts of many years, they have been closely connected with the Club Weekly Competition, both in assisting Frank Deane, our original Promoter, and as Promoter when Frank gave up, until handing over to Phil Hart for a well-earned rest. Always ready to organise a Xmas or Derby Draw, both will be difficult to replace — so much so that the General Committee, at its last meeting, were unable to find even a temporary stand-in. One hopes that, in due course, both Tom and Eileen will be able to return to take up the threads once more.

Face in the crowd – is it you?



In all future editions of this Season's programme we shall publish a photograph of a small section of the crowd at a previous match, one member of which will be clearly indicated by means of a circle. This person will be entitled to a free seat at the next match on producing the programme at the office.

WE AIM TO PLEASE — TRY US

Tunleys

(1)

Glass (2)

Wallpaper (3)

Paint (4)

Polishes (5)

Artist Materials (6)

Prints (7) Ladders (8) Mirrors (9) Brushes (10) Aladdin Heaters (11)

MEMBERS OF THE



12/13 Gloucester Street Swindon Wiltshire



throughout the West

you will find Bradley Estates beautifully situated to meet the requirements of modern living. If you are thinking about a new home and would like to receive full details of our current and planned estates write now to 74 Victoria Road Swindon Wiltshire. Please send me details of

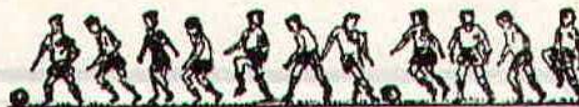
- Green Meadow Estate, Swindon, Wiltshire
- Nythe Estate, Swindon, Wiltshire
- Monkton Park Estate, Chippenham, Wiltshire
- Park Hill Estate, Frome, Somerset
- Damory Down Estate, Blandford Forum, Dorset
- Harkwood Farm Estate, Poole, Dorset
- Roman Way Estate, Bourton-on-the-Water, Gloucestershire

Name.....

Address.....



BRADLEYESTATES



HISTORY OF HULL CITY

Hull City was formed as an amateur club in 1902/3 and turned professional in 1904/5, gaining admission to the Second Division of the Football League the following season. Since this date they have played in the following Divisions of the Football League:

1905/06—1929/30	Division 2.
1930/31—1932/33	Division 3 (North). Champions.
1933/34—1935/36	Division 2.
1936/37—1938/39	Division 3 (North).
War Years.	
1946/47—1948/49	Division 3 (North). Champions.
1949/50—1955/56	Division 2.
1956/57—1957/58	Division 3 (North).
1958/59—	Division 3. Runners-up.
1960/61—1965/66	Division 3 (Champions).
1966/67—	

Their highest position ever in the Second Division was in season 1909/10 when they finished third to Oldham Athletic, being beaten to a promotion place by .286 of a goal.

During the war the Club's Anlaby Road Ground was destroyed during enemy air attacks on the City of Hull and after the war the Club was reformed and acquired their present "Home", Boothferry Park.

In the F.A. Cup the "Tigers", as Hull City are known, have a reputation as doughty fighters. They have been F.A. Cup Semi-finalists — 1929/30 — and reached the sixth round twice in seasons 1948/49 and 1965/66.

Some of the "Tigers" greatest moments have been in the F.A. Cup. The 1929/30 Semi-Final matched them with Arsenal, then considered to be the finest club side in the Football League. The "Gunners" were held to a 2—2 draw but defeated Hull City 1—0 in a replay. Arsenal went on to win the Cup that year.

In 1920/21 Hull City pulled off a great Third Round win over Burnley. The Lancashire club had gone undefeated since September 1920 but on the 19th February, 1921, they crashed to a 0—3 defeat at the hands of the "Tigers". This was Burnley's only defeat in 31 matches from 6th September, 1920 to 25th March, 1921.

In 1948/49 Manchester United put paid to Hull City's hopes by defeating them 1—0 at Boothferry Park in front of 55,019 people. The 1963/64 Cup draw bracketed Hull City with Everton in the Third Round. Everton were then the reigning League Champions and though beaten 2—1 at Goodison Park in the replay, the "Toffees" were fortunate to escape defeat in the first match at Hull, which ended in a 1—1 draw.

BOOTHFERRY PARK

The home of Hull City has had many structural and other ground improvements, reducing the capacity of the ground from approximately 52,000 to some 42,000. This has been caused by the introduction of more seating facilities. The total seats at Boothferry Park now exceeds 9,500. There is covered accommodation for about two-thirds of the spectators. Further facilities at Boothferry Park include their own Railway Station, Boothferry Park Halt, which is a direct link between the main line station of Hull and the football ground. A newly erected camera position has been sited in the roof of the centre of the Main Stand, and Press Box facilities have been brought up to date with modern trends. The playing area is considered to be one of the finest in the Football League. The floodlights — six 175ft. towers — are amongst the best in Europe and the Club has its own practice pitches near the main playing area and one of the finest indoor training centres of any League Club.

Pen Pictures 1969/70

GOALKEEPERS

IAN McKECHNIE

Joined Hull City from Southend United in August 1966. Became the regular first team 'keeper and was an ever-present last season.

BARRY WHITE

A local boy who signed professional forms with the Club in August 1968. A strong, well-built young 'keeper who has had junior and reserve team experience.

DON ROGERS SPORTS

29 FARINGDON ROAD SWINDON

Telephone 27378

Main suppliers to Swindon Town Football Club

Stockists of

**All leading makes of Football Boots and Clothing
Table Tennis, Badminton, Rugby and Hockey equipment**

IN FACT THE COMPLETE SPORTS OUTFITTER

RIMES of SWINDON

			Fare	
			adult	child
PORTSMOUTH	POPULAR EXCURSION TO	Dept. Saturday, October 25th	10.00 a.m.	15/6 10/6
ALSO SPECIAL EXCURSION TO PORTSMOUTH INCLUDING PACKED LUNCH AND DINNER AT 1st CLASS HOTEL ON RETURN				
FARE £2 2s. 0d. inclusive CHILD £1 17s. 0d.				
SERVICE DIRECT TO THE GROUND ALL SEATS NUMBERED AND RESERVED				

Book now at

102 Commercial Rd., Swindon
Telephone 27113

46 Cricklade St., Cirencester
Telephone 3479

or with any of Rimes Booking Agents

Dobell Shearman & Co. Ltd.

HIGH STREET SWINDON

Telephone 4961

**FANCY and COMMERCIAL STATIONERS
TYPEWRITERS and OFFICE EQUIPMENT**

Greetings Cards for all Occasions
from Leading Art Publishers



W. J. CASTLE

Office and Bakery

**4 and 5 MARKET STREET
SWINDON**

Telephone 22017

Specialists—

**BIRTHDAY CAKES - WEDDING CAKES
DAIRY CREAM - PASTRIES
BUNS - ROLLS - SPONGES**



OUR VISITORS (continued)

FULL BACKS

DONALD BEARDSLEY

Born in Alyth, Scotland, and signed for the "Tigers" in October 1964 after serving as an amateur and apprentice with the Club. Don has now become a regular member of the first team and made 35 appearances last season.

DENNIS BUTLER

Born in Fulham and was signed from Chelsea in July 1963. He has been a regular member of the first team ever since. A speedy and strong defender, Dennis made 16 League appearances last season.

PADDY GREENWOOD

Another local born player who came to prominence through the clubs Junior and Reserve teams. Made his League debut at Swindon in January 1966 and has now become a regular first team player. Made 33 appearances last season, scoring two goals.

HALF-BACKS

FRANK BANKS

Formerly with Southend United, Frank joined Hull City in September 1966. A very versatile player who made 22 first team appearances last season.

GEOFFREY BARKER

A young professional signed by Hull City in February 1966. Local born he is a strong, commanding centre-half in whom the Club has great faith. Played in the last six first team games last season and made an excellent impression.

ALAN JARVIS

Born in Wrexham and joined Hull City from Everton in 1964. A full International, representing Wales on three occasions. Scored five goals in 30 first team appearances last season.

TOMMY WILSON

Signed from Millwall on the 11th November, 1967 Tommy made his League debut for the "Tigers" against Norwich an hour after signing. A commanding centre-half with great composure, he made 28 first team appearances last season, scoring one goal.

RAYMOND PETTIT

Another local youngster who has progressed through the Junior and Reserve teams and established himself in the first team. Missed only two League games last season.

CHRISTOPHER SIMPKIN

Now one of the senior players, Chris also came to prominence through the "Tigers" Junior and Reserve teams. A great performer who's consistency makes him a valuable asset to the Club. He was an ever present last season and in the latter stage of the season took over from Chris Chilton as the Club Captain.

FORWARDS

IAN BUTLER

Joined Hull City from Rotherham United in January 1965. An outside-left of great class with excellent ball control and intelligent distribution. Scored 10 goals in 39 first team matches last season.

CHRISTOPHER CHILTON

Born in Sproatley, near Hull. Made his debut for Hull City when a teenager and now has nine seasons of League football behind him. A really industrious centre-forward with a terrific shot in both feet. Injury seriously restricted his first team appearances to 22 last season.

DAVID LILL

Born in Aldbrough, near Hull. Has progressed from Junior and Reserve teams to the Football League side in two seasons. Scored one goal in eight appearances last season.

MALCOLM LORD

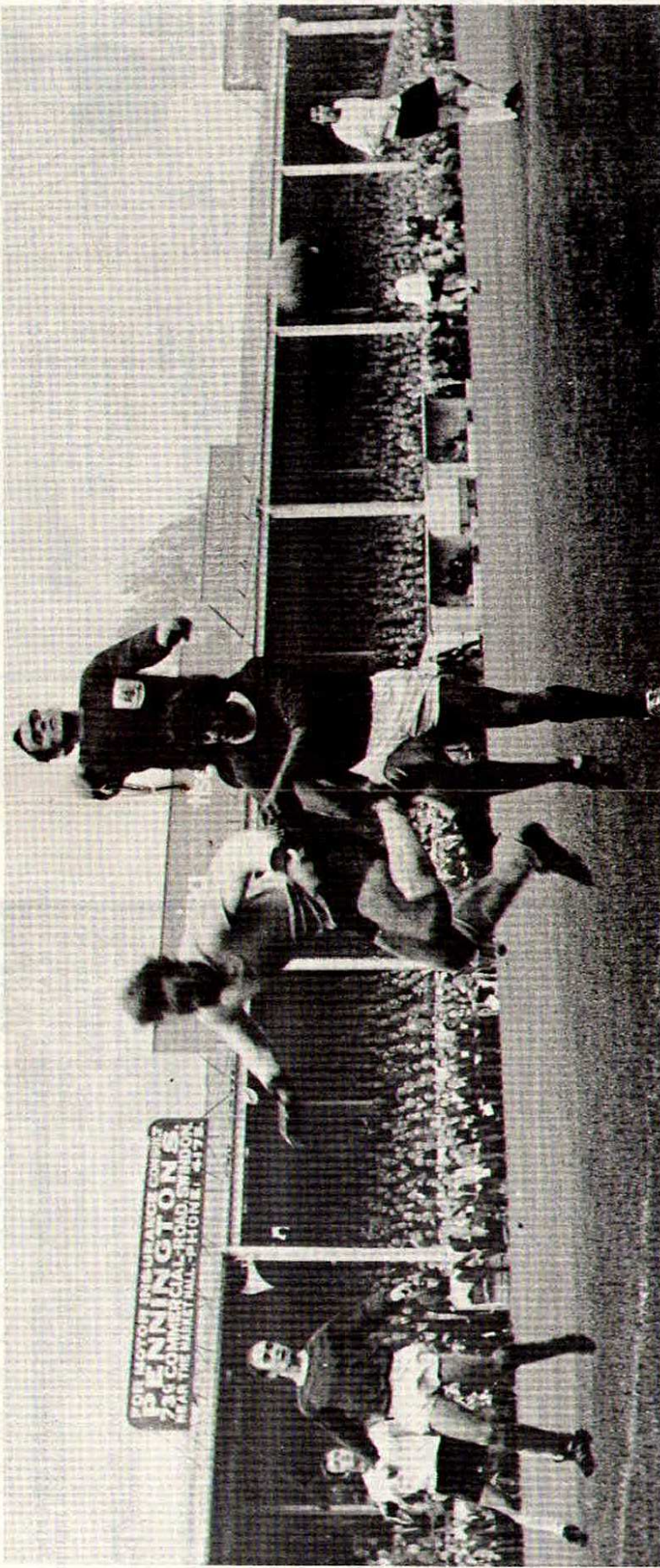
Born in Driffield, East Yorkshire and signed full-time in July 1965. Another former junior player who made 17 first team League appearances last season, scoring three goals.

KENNETH WAGSTAFF

Transferred from Mansfield Town to Hull City in November 1964. Holds the Club scoring record of 31 goals in the 1965/66 season. Scored 20 goals in 39 first team appearances last season.

WILLIAM WILKINSON

Signed full-time in May 1962 and made his League debut at Easter 1963. A really prodigious worker who always can be relied upon to give 100 per cent effort. Scored five goals in 19 first team appearances last season.



Jones, although beating the Sheffield defenders just failed to convert this chance during last Saturday's match.

Photo by Ray Marsh

INTERNATIONAL CLUB FOOTBALL
at the County Ground

SWINDON TOWN
V.
S.C. CAMBUUR LEEUWARDEN

TUESDAY NEXT, OCTOBER 21st, 1969

Kick off 7.30 p.m.
(usual league prices)

Season Ticket Holders requiring their own seats for this game should apply not later than Monday next, October 20th, 1969.

Admission Prices at Portsmouth

Terraces	5s. 0d.
Terraces (Junior)	2s. 6d.
South Stand (Centre)	13s. 0d.
South Stand (Wings)	11s. 0d.
North Stand (Centre)	11s. 0d.
North Stand (Wings)	7s. 6d.

South Stand seats are bookable seven days in advance.

Fixture List - Football Combination

1969

August

9 Southampton	(H) 2—2
16 Swansea Town	(A) 0—1
23 Queen's Park Rangers	(H) 1—4

September

4 Oxford United	(A) 2—0
6 Bristol City	(H) 1—2
17 Cardiff City	(A) 3—2
20 Arsenal	(H) 1—2
27 Luton Town	(A) 0—2

October

4 Reading	(H) 1—2
7 Bristol Rovers	(A)
11 Ipswich Town	(A) 1—0
21 Bristol City	(A)
25 Crystal Palace	(H)

November

8 Plymouth Argyle	(H)
15 Crystal Palace	(H)
22 Swansea Town	(A)
29 Tottenham Hotspur	(H)

December

8 Peterborough United	(A)
13 Leicester City	(H)
17 Plymouth Argyle	(A)
20 West Ham United	(A)
27 Swansea Town	(H)

1970

January

17 Gillingham	(A)
20 Cardiff City	(H)
24 Chelsea	(H)
27 Arsenal	(A)

February

3 Arsenal	(H)
7 Fulham	(H)
10 Bristol Rovers	(H)
17 Walsall	(A)
24 Northampton	(A)

March

7 Birmingham City	(H)
11 Crystal Palace	(A)
18 Norwich City	(A)
21 Bristol Rovers	(A)

April

4 Bournemouth & B.A.	(H)
----------------------	-----------

The Football Combination

up to Tuesday, 14th October, 1969 (not inclusive)

	P	W	D	L	F	A	P
Tottenham Hotspur	9	7	2	0	18	3	16
Ipswich Town	9	7	1	1	29	4	15
West Ham United	9	7	1	1	24	6	15
Birmingham City	10	5	4	1	19	12	14
Leicester City	10	5	2	3	21	16	12
Bristol City	10	5	2	3	16	16	12
Swansea Town	7	4	3	0	4	0	11
Arsenal	8	4	3	1	20	9	11
Reading	7	4	2	1	11	8	10
Norwich City	10	3	4	3	12	10	10
Southampton	10	4	2	4	20	17	10
Crystal Palace	7	4	1	2	15	12	9
Bournemouth & B.A.	9	1	7	1	16	14	9
Cardiff City	7	4	0	3	14	12	8
Luton Town	9	2	3	4	16	19	7
Queens Park Rangers	8	2	3	3	12	16	7
Swindon Town	10	3	1	6	12	17	7
Oxford United	7	3	0	4	9	11	6
Fulham	9	2	2	5	8	10	6
Plymouth Argyle	8	3	0	5	9	17	6
Chelsea	9	2	1	6	11	22	5
Bristol Rovers	8	2	1	5	7	15	5
Northampton Town	6	2	0	4	8	15	4
Gillingham	8	1	2	5	7	20	4
Walsall	9	0	2	7	5	20	2
Peterborough United	9	0	1	8	5	27	1

The man in the middle

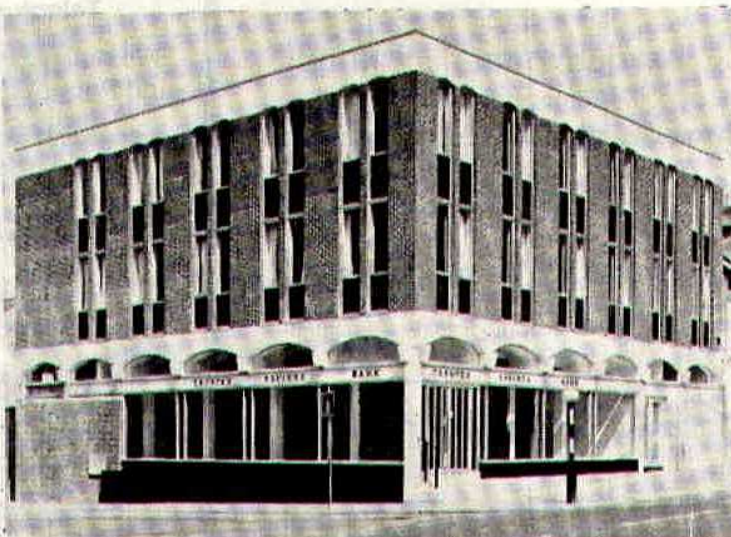


JOHN HOMEWOOD

Age 37 years. Four years as a Football League referee and five years as a linesman. Previous to this he spent eight years as a Southern League referee. Started refereeing at the age of 16. Highlights of his career include senior linesman in the 1967/68 Cup Final, and linesman for two European Cup matches. Refereed Southern League and Southern Junior Floodlight Cup Final. His first Football League match was refereed at Swindon.

T RUSTEE
S AVINGS
B ANK

93 Commercial Road
Swindon



Facilities include

- CURRENT ACCOUNT SERVICE
- 24 HOUR CASH DISPENSER
- T.S.B. UNIT TRUST
- CONTRACTUAL SAVINGS SCHEME
(giving substantial Tax benefits)

**INTEREST 6½% IN THE
SPECIAL INVESTMENT DEPT.**

Hatton's Newsagency

A. J. D. & N. J. Woodhouse

Newsagents :: Tobacconists
Confectioners

Agents for Wessex School of Motoring
Booking Agents for Rimes Coaches

6 REGENT CIRCUS (near G.P.O.)
Telephone Swindon 22731

BRETTS

PET and GARDEN SUPPLIES

32-33 Commercial Road
and
6 Cromwell Street Swindon

THE PORK SHOP

(Swindon Bacon Curing Co. Ltd.)

Specialists in

Bacon - Pork - Cooked Ham

50 FLEET STREET SWINDON
Telephone 22122

J. WILMER

Coal Merchants

St. Margaret's Road Swindon

Telephone 22535

SOUTHERN LAUNDRY CO. LTD.

Launderers and Dry Cleaners

HAYDON STREET SWINDON
Telephone 4161

At Your Service

A. E. LUDLOW LIMITED

Wholesale Fruit and Potato Merchant

COLBOURNE STREET
SWINDON WILTSHIRE
Telephone Swindon 3583

We deliver Fresh Fruit, Vegetables
and Potatoes daily—Wholesale Only

FOR ALL YOUR ANGLING NEEDS
CONSULT

Frank Woodward

Swindon's Fishing Tackle Specialist

25 HAVELOCK STREET SWINDON
Telephone 3879

For Paints of Good Quality

H. S. Hodges & Sons

(SWINDON) LTD.

Cricklade Road Swindon
Telephone 22422
Dulux, Brolac, Valspar, Wallcharm, etc.

24 hour Delivery
Service -

YOUR COMPLETE JANITORIAL SERVICE

Wilts Cleaning Supply Service

Kembrey Warehouse Rear 255 Cricklade Road
SWINDON

Telephone 21012

Represented by G. ALEXANDER
Telephone Swindon 27833

Hodgkinson in action punching clear from Peter Noble.



Hodgkinson touches over the bar.



Photos by Ray Marsh

HARRY LUNN

(Ex NOTTS COUNTY, PORTSMOUTH and SWINDON TOWN F.C.)

Fish Bar and Restaurant
27-28 COMMERCIAL ROAD SWINDON

RESTAURANT open 9 a.m. to 10 p.m. for

Snacks - Lunches - High Teas - Evening Meal

FISH BAR open Mid-day and Evenings until 11 p.m.

HULFORD MOTORS LIMITED

SELF DRIVE HIRE

Fleet of 1969/8 Fords Escorts De-Luxe
Cortinas De-Luxe Cortinas 1600 Estate
(Bench Seat Column Change) — Zephyr V4s

SHRIVENHAM ROAD

(200 yards from Football Ground)

Telephone 4934

Large Car Park Available

COWLEY BROS. (Wroughton) LTD.

BUILDERS OF MODERN ATTRACTIVE
HOUSES and BUNGALOWS

Developments at

SWINDON

WROUGHTON

BADBURY

Office

28 NEWPORT STREET
SWINDON

Telephone Swindon 6870

Reserved for British Rail



Inter-City

Key of the Board

First section

- A—Burnley v. Sheffield Wednesday
- B—Chelsea v. Albion
- C—Crystal Palace v. Leeds United
- D—Derby County v. Manchester City
- E—Everton v. Stoke City
- F—Ipswich Town v. Liverpool
- G—Manchester United v. Notts Forest
- H—Southampton v. Coventry City
- I—Sunderland v. Arsenal
- J—Tottenham v. Newcastle United
- K—Wolverhampton W. v. West Ham
- L—Aston Villa v. Birmingham City
- M—Bolton Wanderers v. Oxford Utd.
- N—Cardiff City v. Norwich City
- O—Carlisle Utd. v. Q.P. Rangers
- P—Charlton Athletic v. Blackburn R.
- Q—Huddersfield Town v. Middlesbrough
- R—Leicester City v. Bristol City
- S—Preston North End v. Millwall
- T—Sheffield United v. Blackpool

Second section

- A—Bradford City v. Plymouth Argyle
- B—Brighton & H.A. v. Luton Town
- C—Bristol Rovers v. Bury
- D—Mansfield Town v. Reading
- E—Orient v. Doncaster Rovers
- F—Rochdale v. Tranmere Rovers
- G—Rotherham United v. Fulham
- H—Stockport County v. Shrewsbury T.
- I—Torquay United v. Halifax Town
- J—Walsall v. Bournemouth & B.A.
- K—Aldershot v. Northampton Town
- L—Crewe Alexandra v. Workington
- M—Grimsby Town v. Peterborough Utd.
- N—Hartlepoons Utd. v. Bradford
- O—Lincoln City v. Scunthorpe Utd.



Going by Car?

PORTSMOUTH

Saturday, 25th October, 1969

SWINDON to PORTSMOUTH

Leave Swindon by the A345 road to Marlborough, leave Marlborough on the A346 to **Burbage**. **16½ miles**

Take A338 from Burbage and join A346 at Collingbourne Ducis, continue till junction with A342 and take this road to **Ludgershall**. **25½ miles**

On leaving, turn left for Weyhill and join the A303 for Andover then via A3057 and B3420 through Wherwell, join the A34 and continue to **Winchester**. **47½ miles**

Follow A34 until junction with A333 and continue via Bishops Waltham and Wickham to join the A3. Continue to ground via Copnor Road and Milton Road to Fratton Park, **Portsmouth**. **74½ miles**

Route kindly supplied by R.A.C.



ROGER SMART



Suppliers to the Swindon Team
MAY WE SUPPLY YOU?



EARLE

of Chippenham Limited

MAIN

FORD

DEALERS

COCKLEBURY ROAD CHIPPENHAM

Telephone 3255

H. HIBBERD LIMITED

FOR YOUR EARTH-MOVING EQUIPMENT

Plant Hire Contractors



40 NEWPORT STREET SWINDON

Telephone Swindon 6125

Fixture List - Division I I

1969

August

9 Blackburn Rovers	(A)	0—2
13 Cardiff City	(A)	2—2
16 Carlisle United	(H)	2—2
19 Cardiff City	(H)	2—1
23 Aston Villa	(A)	2—0
30 Charlton Athletic	(H)	5—0

September

2 League Cup (2) Swansea	(A)	3—1
6 Blackpool	(A)	2—3
13 Oxford United	(H)	0—0
16 Middlesbrough	(A)	0—0
20 Queen's Park Rangers	(A)	0—2
24 League Cup (3) Oxford	(A)	0—1
27 Leicester City	(H)	1—1
30 Millwall	(H)	2—1

October

4 Bolton Wanderers	(A)	1—0
7 Carlisle United	(A)	2—2
11 Sheffield United	(H)	2—1
15 League Cup (4)		
18 Hull City	(H)
25 Portsmouth	(A)
29 League Cup (5)		

November

1 Norwich City	(H)
8 Birmingham City	(A)
15 Watford	(A)
19 League Cup Semi-Final		
22 Huddersfield Town	(H)
29 Preston North End	(A)

December

3 League Cup Semi-Final		
6 Bristol City	(H)
13 Oxford United	(A)
20 Blackpool	(H)
26 Aston Villa	(H)
27 Charlton Athletic	(A)

1970

January

3 F.A. Cup (3)		
10 Queen's Park Rangers	(H)
17 Leicester City	(A)
24 F.A. Cup (4)		
31 Bolton Wanderers	(H)

February

7 Sheffield United	(A)
14 Blackburn Rovers	(H)
21 Portsmouth	(H)
28 Hull City	(A)

March

7 Huddersfield Town	(A)
14 Preston North End	(H)
21 Bristol City	(A)
28 Watford	(H)
30 Norwich City	(A)
31 Birmingham City	(H)

April

4 Millwall	(A)
11 F.A. Cup Final		
14 Middlesbrough	(H)

League Table - Division I I

(up to and including Tuesday, 14th October, 1969)

	P	W	D	L	F	A	P
Sheffield United	15	9	2	4	29	12	20
Queen's Park Rangers	14	9	2	3	29	14	20
Blackburn Rovers	14	8	3	3	19	8	19
Huddersfield Town	14	8	3	3	24	14	19
Leicester City	14	7	4	3	23	15	18
Swindon Town	15	6	6	3	23	17	18
Cardiff City	14	6	4	4	22	15	16
Carlisle United	14	6	4	4	20	20	16
Blackpool	14	6	3	5	17	21	15
Norwich City	15	6	3	6	13	18	15
Hull City	15	6	2	7	22	23	14
Bristol City	13	5	3	5	18	13	13
Birmingham City	14	5	3	6	16	18	13
Middlesbrough	15	5	3	7	15	21	13
Charlton Athletic	15	3	7	5	13	28	13
Preston North End	14	3	6	5	10	11	12
Oxford United	13	4	4	5	11	13	12
Portsmouth	14	3	5	6	13	24	11
Bolton Wanderers	14	4	2	8	18	22	10
Watford	14	3	3	8	14	19	9
Millwall	14	1	6	7	17	29	8
Aston Villa	14	2	4	8	11	22	8

AKERS GARAGE LIMITED

THE STREET MOREDON SWINDON WILTSHIRE

Telephone Swindon 3457/8

main dealer for
VAUXHALL/BEDFORD
and
Parts and Accessories
Sales and Service

Showrooms open
MONDAY to FRIDAY — 8 a.m. to 8 p.m.
SATURDAY — Closed 7 p.m.
SUNDAYS — 10 a.m. to 2 p.m. for Petrol and Viewing



MODERN LIVING IN EXPERIENCED HANDS

Wilson homes are the result of over 60 years experience in house building. The Company Architect and his design team are always researching into the ever changing requirements of home buyers, to give them better designed homes, which are easy to run, easy to maintain and comfortable to live in.



All our houses and bungalows are built to the stringent specification of the National House Builders Registration Council who will guarantee your home for 10 years.

Visit a Wilson Show Home and you will see for yourself why Wilson's have such a reputation in giving value for money.

WILSON

(Swindon) LTD., 90-92 Commercial Road, Swindon Telephone 6361 (3 lines)

seating manufacturers for Stadium Seats Ltd

- * Heavy, medium and light steel fabrication
- * Custom made production line equipment
- * Ancillary work for industry and the building trade

FAST EFFICIENT SERVICE BY



MARTYN LYN SHAW LTD

BOUNDARY WORKS - STRATTON ROAD - SWINDON - WILTS

Telephone 21844

spectator seating in high density polyethylene

- * Supplied to over 36 Football League clubs
- * Any colour. No maintenance
- * Industrial seats for the food, electronics and pharmaceutical industries
- * Largest supplier of spectator and industrial seating in Europe

STADIUM SEATS LTD

STRATTON ROAD - SWINDON - WILTS Telephone 21844